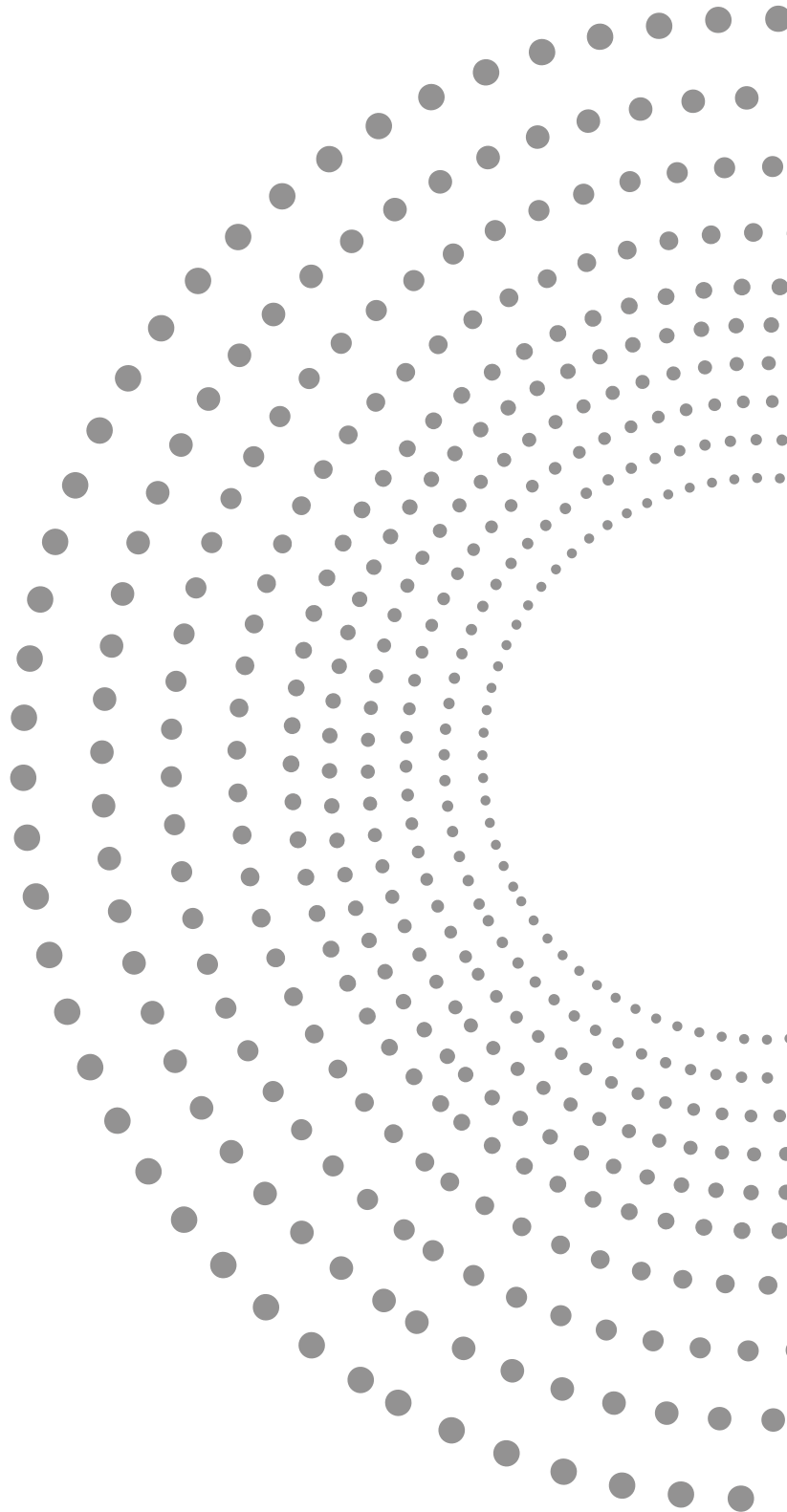


discover the  
**ITZEL**.  
experience



THE ARTISTRY OF TIMELESS MODERN DESIGNS

*Crafted for Obsession*

**ITZEL**  
RUBINETTERIE



## WHO WE ARE

ITZEL is an organization comprised of strategists, creative, technologists, designers, marketers and investors. We deliver exceptional results for our clients by gaining a deep understanding of their needs, customers and target market and there combining insight driven strategy and ideation with highest levels of execution.

These designs are suitable for modern living space. ITZEL is focussed on completely redefining the bathroom experience of our Indian and International customers to utmost satisfaction, in years to come!

ITZEL faucets are made in India in its state-of-art plant located in the heart of India with R&D from ITALY with best of designers. Itzel faucets are constructed with solid metal which provides great strength, durability and higher quality finish attained through extensive quality checks.

At ITZEL we keep our promise to the environment intact by developing new technology that offer advanced solutions for water saving. Our social responsibilities are reflected through innovation in new materials which we are using to develop our products. Our flagship products have been well coordinated with product & technologies that save water up to 60% without compromising on the wellness theme!



## DIRECTOR'S MESSAGE

Crafted with Obsession is our guiding principal and our mission is to enhance comfort living in bathroom spaces. At the highly Modern atelier, we craft precision, perfection, opulence.

ITZEL in an elegant and passionate way pursues your fantasies to produce ingenious bathing solutions.

ITZEL products reflect the heritage of excellence, leading-edge design, advanced technologies, sustainability and renowned craftsmanship characteristics through our innovative Kitchen and Bath products. Itzel has been developing new products categories since its inception.

Our mission represents creative passion and our commitment to bring new and unique products to market and reinforce our dedication in creating truly delightful consumer experience.

A handwritten signature in black ink that reads "Rajeev Adlakha." with a stylized flourish underneath.

Rajeev Adlakha  
Managing Director



## VISION

---

ITZEL dominates as leading manufacturing company in terms of quality, design and technology.

Brand New Infrastructure, more customer centric approach and tailor made partnership solution is commitment to this ever growing industry. With a vision to revolutionize and redefine bathroom industry, Itzel has a focus of selling an experience to its customers with redefined and unique bathroom solutions, by creating value & pacing the customer experience.

Itzel reflects luxury through quality, style and craftsmanship.



## MISSION

---

ITZEL asserts itself as a beautiful integration of performance; aesthetically modern space and inspiring designs with a consistency in quality standards upgraded technology measures.

Our products go through extreme quality checks and latest from industry which create us as the most trustable brand in the industry for them. The kind of customers who love our work are the one who do not compromise on quality and innovation.

Our service is all about attention to detail, clarity of expectations and extremely high creativity that provides fair pricing and flawless experience.

# OUR BRAND VALUES

---

Quality, Technology, Design and Sustainability. Four brand values that illustrate our commitment to creating exceptional experiences. We set our standards extremely high to ensure that every time you turn on ITZEL faucet or step into a ITZEL shower you can feel the difference.



## TECHNOLOGY

---

ITZEL has been regarded as the craftsmen with latest technology, because of its innovations, outstanding design and award winning fittings.

By the combination of their advanced craftsmanship and their cutting edge approach to effective teamwork and processes, ITZEL takes the lead in developing, designing and manufacturing outstanding product range, all the while testing and fine tuning each piece to ensure continued customer satisfaction.

The result: Timeless design and quality that lasts a life time. Again and again ITZEL products surprise users with unique features. When you use an ITZEL product you can feel the difference time after time.

## DESIGN

---

ITZEL is a head of competition in introducing new and innovative designs. The company is quick to identify market trends and believe in extensively collaborating with its international manufacturing partners to design and develop products which combine exquisite style with state of art technology, unparalleled performance and the highest quality.



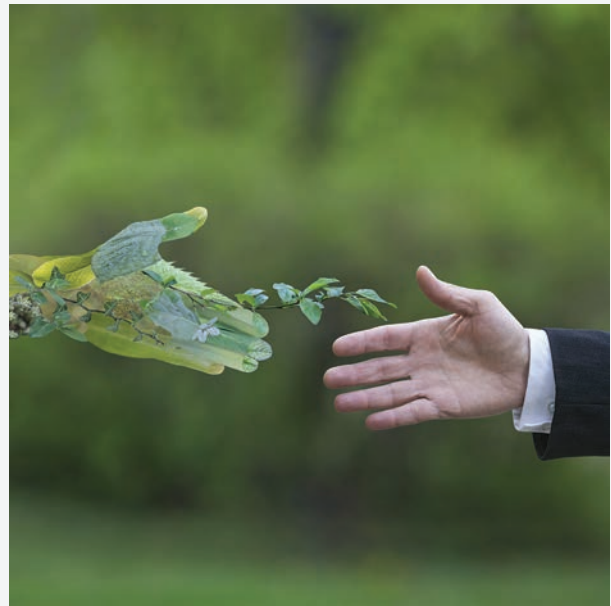
## QUALITY

ITZEL faucets provide a great experience with their high quality performance. Our states of art manufacturing unit are backed by world class testing lab. That's why we conform to highest quality and regulatory standards.

**Cartridges:** Itzel cartridges are tested to give a longer and trouble free operating life of up to 20 years. Work smoothly even at high temperature (85°) and in various pressure conditions (0.5-5 bar).

**Chrome:** High plating thickness (nickel: 10 microns and chrome: 0.3 microns) provides tolerance to extreme climate & water conditions. 450+ hours of salt spray test ensures our finishes are higher durable and corrosion resistance for a much long duration.

**Aerators:** Devices that mix air with water to give a soft and splash free flow. Our integrated honey come structured aerator provides lime building up protection. Intergrated anti clogging dome screen of aerator filter sediments and dust particles.



## SUSTAINABILITY

We at ITZEL help our channel partners to become professional traders in providing most innovative bathroom solutions through high quality, high aesthetic value products of durability and innovation.

The kind of customers who love our work are the one who do not compromise on quality and innovation.

Our products go through extreme quality checks and latest from industry which create us as the most trustable brand in the industry for them.

Our service is all about attention to detail, clarity of expectations and extremely high creativity that provides fair prising and flawless experience.

# MANUFACTURING PROCESS

A Creation That Delivers Exceptional Value, Style & Innovation.



### MOULDS & TOOLS:

All moduls and jigs are developed in our manufacturing unit with vertical machine centre (VMC) as required, with detailed survey from market and customer.

### SAND CORE :

We ensure uniform wall thickness by the process of 'core shooting' on the brass ingots before casting. This ensures the uniform flow of water inside a faucet and the ultimate sensual feel of replenishing your skin with gentle swirls.

#### Quality Controls:

- 1) Sand and Catalyst composition
- 2) Core hardness
- 3) Core weight



### INDUCTION CASTING OF BRASS:

Made from brass ingots of high purity, density and superior grain structure, our products follow a streamlined process in the induction casting of brass as per international standards.

#### Quality Controls:

- 1) Composition of Brass (CB7555-UNEN 1982-2008)
- 2) Weight Standards
- 3) Uniform wall thickness (Internal / External)



### MACHINING:

All our product components are processed on precision machines which makes it standardized and easy to replace. The hardness and work ability make brass one of the most versatile machining materials available, making it possible to achieve an impeccable mirror-finish with sensual and exotic contours that add elegance and a tinge of luxury in every fragment of our design. The muted golden-yellow color of brass is refined to its finest by the use of imported brushing tools at our dedicated facility and ensures a long lasting life.

#### Quality Controls:

- 1) Dimensional controls drawings in technical documents respecting tolerance .
- 2) Thread Gauge (Go / No go).
- 3) Components fitment.

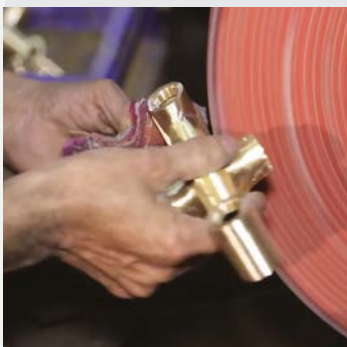


#### **POLISHING & GRINDING:**

Polishing/Grinding is done on very advance machines to provide mirror smooth finish which is essential for perfect surface coating.

#### **Quality Controls:**

Visual controls 100% as operative instructions.



#### **SURFACE FINISHING (ELECTROPLATING, POWER COATING AND PAINT):**

##### **(A) NICKEL PLATING:**

Latest ultrasonic cleaning system is used for cleaning and digressing the product before electroplating. The thickness - nickle is minimum 10 to 12 microns as per international standards.

##### **(B) CHROMIUM PLATING:**

Quality chromium plating system which is copper based is used for giving the best surface shine having very resistance against corrosion. Chrome thickness is minimum 0.3 microns.

#### **Quality Controls:**

- 1) Salt spray test to click durability
- 2) Adherence
- 3) Aesthetic Finish
- 4) Thickness of Nickel and Chrome

#### **ASSEMBLING & TESTING:**

All the assembly lines are equipped with required components and testing machines.

#### **Quality Controls:**

- 1) Air testing Machine  
(from 4 to 6 bar - from 58 to 87 Psi)
- 2) Torque Components  
in Nm
- 3) Aesthetic control  
100%




#### **FINAL CONTROL :**

We follow International standards ISO 2859-1 : 1999 Components fitment.

# CERTIFICATIONS AND APPROVALS

ITZEL is a creation that delivers exceptional value, style & innovation. ITZEL products are internationally certified and tested by best labs to ensure absolute quality and results.



*Certificate*  
OF REGISTRATION


**ITZEL BATH (INDIA) PVT. LTD.**  
Address: Works - 596/597, MODERN INDUSTRIAL ESTATE, PART-A ,  
BAHADURGARH, HARYANA-124507  
Registered Office- A-19-A , MAYAPURI INDUSTRIAL, AREA PHASE -2, NEW  
DELHI-110064

has submitted Declaration of Conformity (dated: 03-12-2016) according to

**Construction Products Regulation (CPR 305/2011),  
EN 14516:2006+A1:2010 14527:2006+A1:2010**

Organization has been assessed and found to be conforming with the requirements of the stated directive and  
standards submitted through Declaration of conformity

Hence manufactured places the CE marking with his own responsibility as follows:




For the Products of

**C.P. Bath Fittings**


By QSA International, UK

Registration Number : QSA-1312178  
Initial Certification Date: 11 Dec 2013  
Re-Certification Date: 10 Dec 2016  
Certification Expiry Date: 09 Dec 2019



Quality System Assessment  
International Limited  
27, Old Gloucester Street,  
London, WC1N 3AX, ENGLAND

*Startford Ray*  
Certification Manager



CGA  
Centre for Global Accreditation  
Registration No. 02-140207

website: [www.qsai.co.uk](http://www.qsai.co.uk)  
e-mail: [qsainternational@yahoo.co.uk](mailto:qsainternational@yahoo.co.uk)

Registered with Registrar of Companies for England and Wales through Registration Number 8127625  
This certificate is a property of QSA International Ltd. This certificate must not be used for any other purpose.



*Certificate of Compliance*

This is to certify that

**ITZEL BATH (INDIA) PVT. LTD.**  
Address: Works - 596/597, MODERN INDUSTRIAL ESTATE, PART-A , BAHADURGARH  
HARYANA-124507  
Registered Office- A-19-A, MAYAPURI INDUSTRIAL AREA, PHASE -2,  
NEW DELHI-110064 INDIA

has been assessed and found to be conforming the requirements of the

**Construction Products Directive 89/106/EC**

The technical documentation / inspection / test results comply with the requirements of  
Construction Products Directive 89/106/EC, Hence the manufacturer has issued a  
Declaration of Conformity according to EN 14516:2006+A1:2010 14527:2006+A1:2010 and  
places the CE marking with his own responsibility as follows



for the scope of

**C.P. Bath Fittings**

By QSA International, UK

Registration Number : QSA-1312178  
Initial Certification Date : 11 Dec 2013  
Certification Expiry Date : 10 Dec 2016



*Startford Ray*  
Certification Manager

website: <http://www.qsai.co.uk>  
e-mail: [qsainternational@yahoo.co.uk](mailto:qsainternational@yahoo.co.uk)

H.Q. Address : 65 Mill Lane, Newbury,  
RG24 8NE, Berkshire,  
United Kingdom.



## GERMAN CERT

Quality Management System Certificate

### ITZEL BATH (INDIA) PVT. LTD.

located at  
Works - 596/597, MODERN INDUSTRIAL ESTATE, PART-A, BAHADURGARH,  
HARYANA-124 507, INDIA  
Registered Office- A-19-A, MAYAPURI INDUSTRIAL AREA, PHASE -2,  
NEW DELHI 110 064, INDIA

German Cert Co., Ltd. hereby certifies that the quality management system  
of the above organization has been evaluated and found to be in line with the  
requirements of the following standard:

**ISO 9001:2008**  
(Excluding Clause: 7.3 Design and Development)

for the scope of

**Manufacture and Supply of C.P. Bath Fittings**

Certificate Number: KorQ-132455

This certificate is valid from December 10, 2013 until December 09, 2014.

Initial certification date: December 10, 2013  
GC certification date: December 10, 2013  
Certification valid until: December 09, 2016

*Y. Cao*

Scheme Manager



10F, Jongsuwan Bldg, Yongsu-dong, Eunhaeng-ro 29, Yongsong-gu, Seoul 150-730, Korea  
This certificate is a sole property of GERMAN CERT and therefore shall be returned to it upon its request. (Rev.4)



## Quality Management System Certificate

GERMAN CERT

### ITZEL BATH (INDIA) PVT. LTD.

located at  
Works - 596/597, MODERN INDUSTRIAL ESTATE, PART-A, BAHADURGARH,  
HARYANA-124507, INDIA  
Registered Office- A-19-A, MAYAPURI INDUSTRIAL AREA, PHASE -2,  
NEW DELHI-110064, INDIA

German Cert Co., Ltd. hereby certifies that the quality management system  
of the above organization has been evaluated and found to be in line with the  
requirements of the following standard:

**ISO 9001:2008**  
(Excluding Clause: 7.3 Design and Development)

for the scope of

**Manufacture & Supply of C.P. Bath Fittings**

Certificate Number: GCQ-151237

Initial certification date: December 10, 2013  
GC certification date: November 30, 2016  
Certification Expiry Date: September 14, 2018  
Re-Certification Expiry Date: November 29, 2019  
(Rev. 1-T)

*Daek Wook Ki*

Scheme Manager

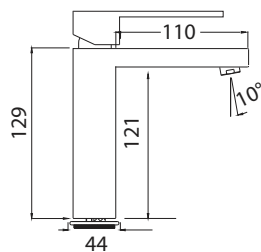


This accreditation mark indicates that the certification body  
(certification number: KAB-QC-01) is accredited by Korea Accreditation Board (KAB)  
as a quality management system certification body.

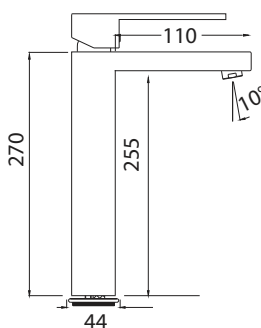


10F, Jongsuwan Bldg, Yongsu-dong, Eunhaeng-ro 29, Yongsong-gu, Seoul 07230, Korea



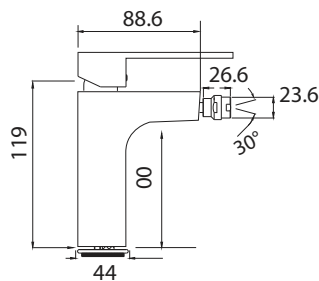


CST-2201  
Single Lever Basin Mixer

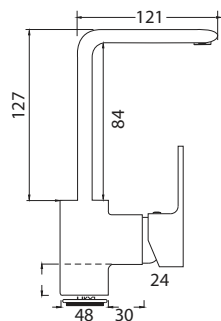


CST-2201B  
Single Lever Basin Mixer Long

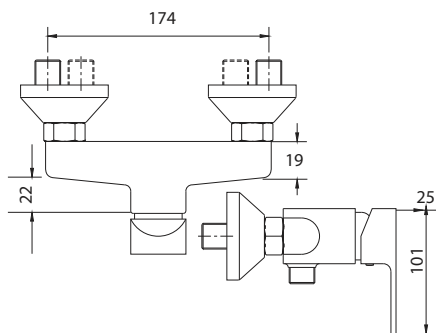




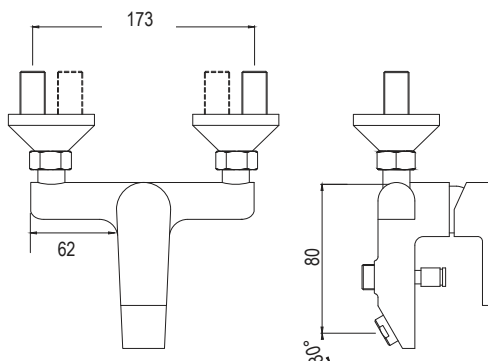
CST-2203  
Single Lever Bidet Mixer



CST-2301  
Single Lever Sink Mixer



CST-2210  
Single lever shower mixer



CST-2220  
Single Lever Bath Mixer



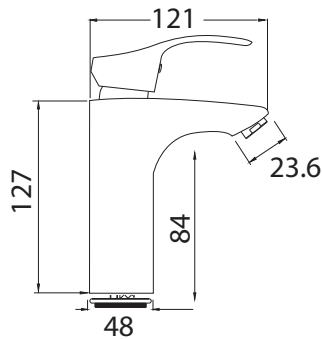
CST-2002  
Single lever diverter 2 inlets with 2 outlets



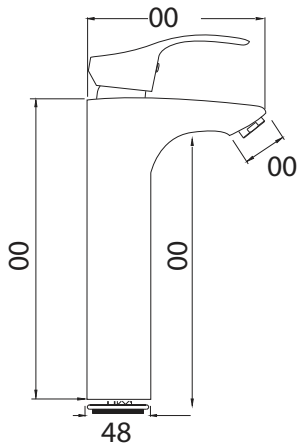




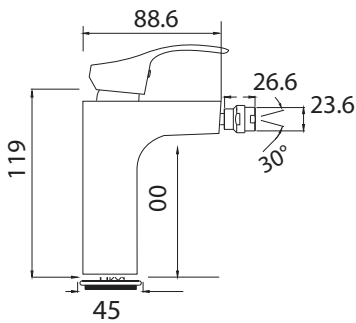
# BYELOOP



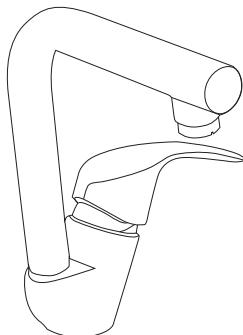
BLP-2201  
Single Lever Basin Mixer




BLP-2201B  
Single Lever Basin Mixer Long

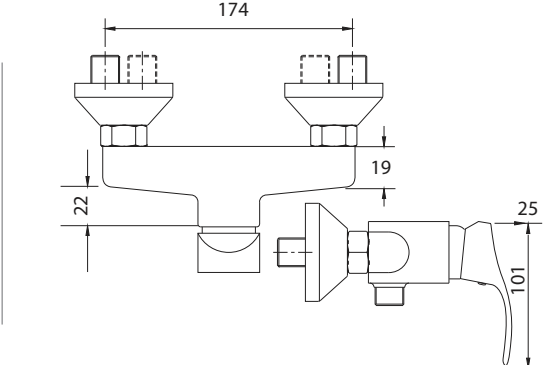


BLP-2203  
Single Lever Bidet Mixer




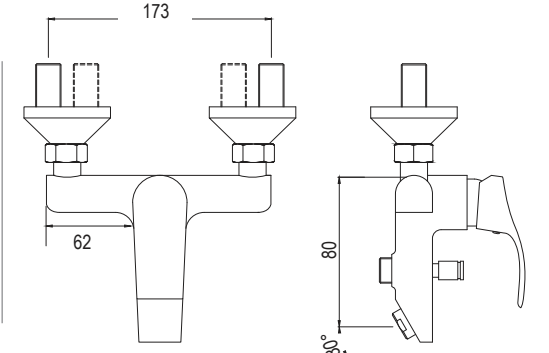
BLP-2301  
Single Lever Sink Mixer





BLP-2210  
Single lever shower mixer





BLP-2220  
Single Lever Bath Mixer





BLP-2002  
Single lever diverter 2 inlets with 2 outlets



BLP-2201  
Single Lever Basin Mixer  
Rose Gold

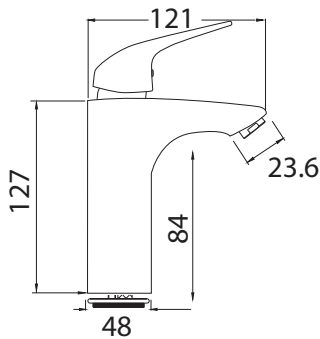


BLP-2201  
Single Lever Basin Mixer  
Gold

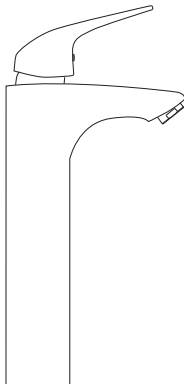


BLP-2201  
Single Lever Basin Mixer  
Antique Black

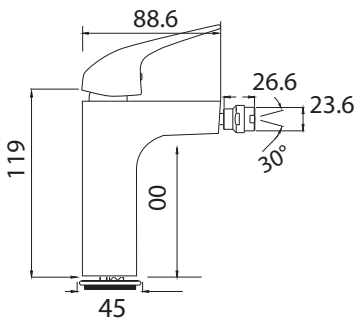




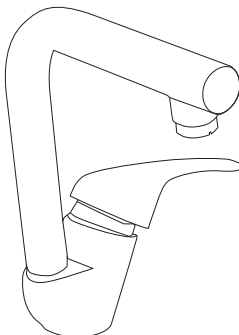
CSM-2201  
Single Lever Basin Mixer



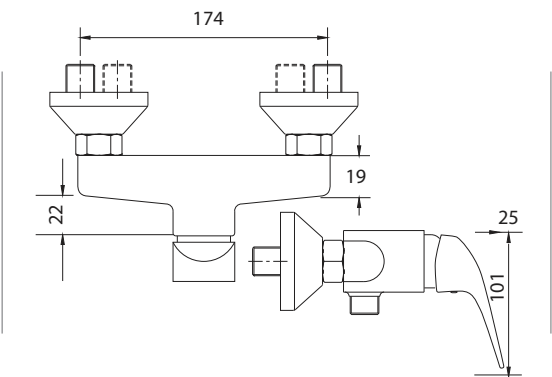
CSM-2201B  
Single Lever Basin Mixer Long



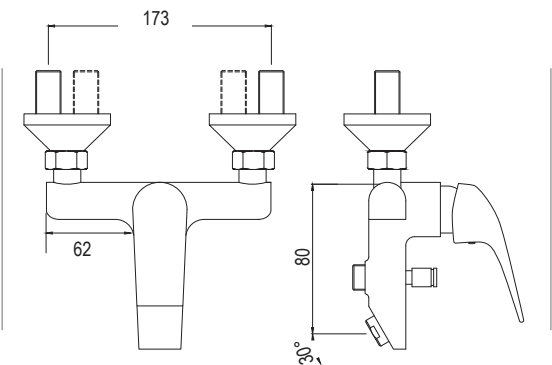
CSM-2203  
Single Lever Bidet Mixer



CSM-2301  
Single Lever Sink Mixer



CSM-2210  
Single lever shower mixer



CSM-2220  
Single Lever Bath Mixer



CSM-2002  
Single lever diverter 2 inlets with 2 outlets

# DIFFRENT FINISHES

---



ROSE GOLD & CP



GOLD & CP



ANTIQUE BLACK & CP



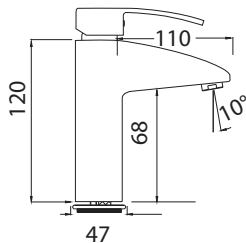
ANTIQUE ROSE GOLD & CP



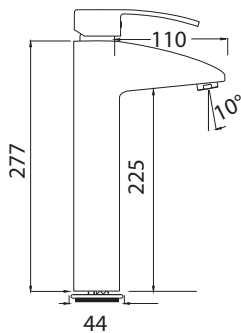
ANTIQUE GOLD & CP



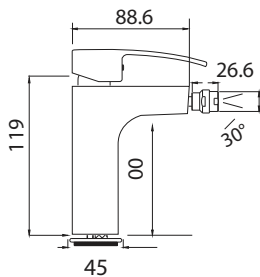




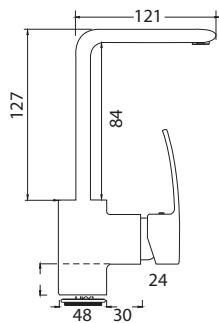
JNT-2201  
Single Lever Basin Mixer



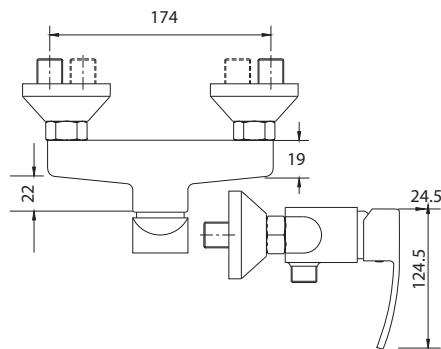
JNT-2201B  
Single Lever Basin Mixer Long



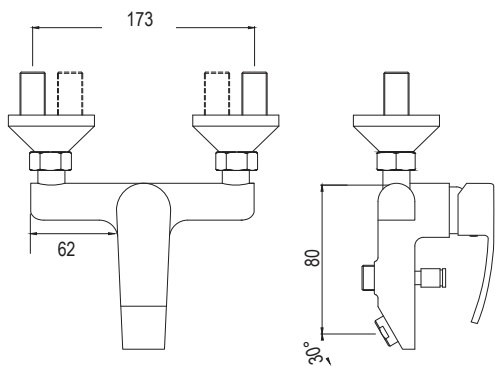
JNT-2203  
Single Lever Bidet Mixer



JNT-2301  
Single Lever Sink Mixer



JNT-2201  
Single lever shower mixer



JNT-2210  
Single Lever Bath Mixer



JNT-2002  
Single lever diverter 2 inlets with 2 outlets



JNT-2201  
Single Lever Basin Mixer  
Rose Gold

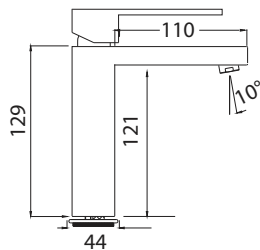


JNT-2201  
Single Lever Basin Mixer  
Gold

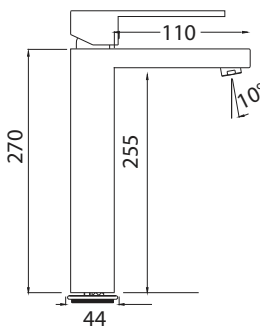


JNT-2201  
Single Lever Basin Mixer  
Antique Black

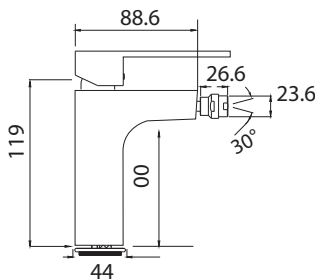




DVZ-2201  
Single Lever Basin Mixer



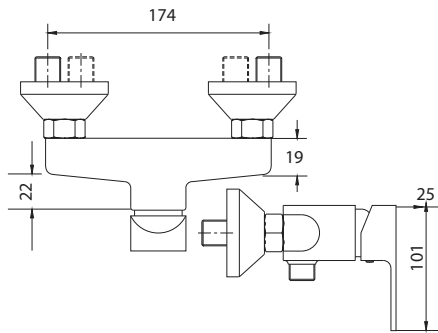
DVZ-2201B  
Single Lever Basin Mixer Long



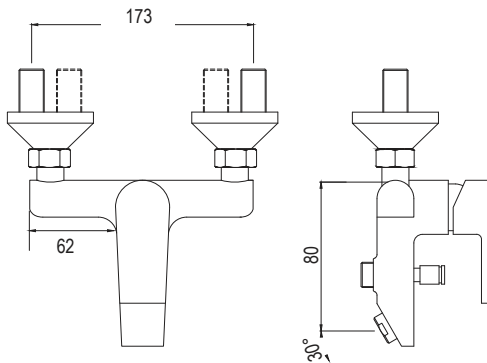
DVZ-2203  
Single Lever Bidet Mixer



DVZ-2301  
Single Lever Sink Mixer



DVZ-2210  
Single Lever Shower Mixer



DVZ-2220  
Single Lever Bath Mixer



DVZ-2002  
Single lever diverter 2 inlets with 2 outlets



DVZ-2201  
Single Lever Basin Mixer  
Rose Gold



DVZ-2201  
Single Lever Basin Mixer  
Gold



DVZ-2201  
Single Lever Basin Mixer  
Antique Black







CRO-1101  
Pillar Cock Foam Flow



CRO-1102  
Bib Cock with Flange,  
Foam Flow



CRO-1103  
Bib Cock Long Body with Flange,  
Foam Flow



CRO-1104  
Angle Valve with Flange



CRO-1106/1107 | Exposed Part Kit of  
Concealed Stop Cock 15mm/20mm  
with Sleeve, Operating Lever and  
Adjustable Wall Flange  
(Compatible with ALD-3101/3102 only)



CRO-1128  
Bib Cock Two Way with Flange,  
Foam Flow



CRO-1109 | Pillar Cock Swinging  
Swivel Spout, Foam Flow



CRO-1122 | Sink Cock with Swivel  
Spout with wall Flange, Foam Flow



CRO-1122  
Sink Cock 2-in-1 with Swivel Spout  
with wall flange



CRO-1113  
Sink Mixer with Swinging Spout with  
Connecting Legs, Nuts & Flanges



CRO-1116 | Wall Mixer 3-in-1 with Provision for both  
Overhead Shower & Hand Shower, with L Bend with  
Supporting Legs & Nuts (w/o Overhead & Hand Shower)





KRA-1101  
Pillar Cock



KRA-1102  
Bib Cock with Flange



KRA-1103  
Bib Cock Long Body with Flange



KRA-1106/1107  
Exposed Part Kit of Concealed Stop Cock  
15mm/20mm with Sleeve, Operating Lever  
and Adjustable Wall Flange  
(Compatible with ALD-3101/3102 only)



KRA-1104  
Angle Valve with Flange



KRA-1122  
Sink Cock 2-in-1 with Swinging Spout,  
Foam Flow



KRA-1109  
Pillar Cock Swinging  
with Swivel Spout, Foam Flow



KRA-1110  
Pillar Cock Swan Neck  
with Casted Spout, Foam Flow



KRA-1114  
Wall Mixer Non Telephonic



KRA-1113  
Sink Mixer with Swinging Spout,  
with Connecting Legs, Nuts & Flanges



KRA-1117 | Wall Mixer Telephonic with L Bend  
with Provision for Overhead Shower with  
Supporting Legs & Nuts (w/o Overhead Shower)

SOMETHING SPECIAL



SSP-1101 | Pillar Cock Single Lever Movement **SWIFT**

SWIT



SSP-1108 | Sink Cock Single Lever Movement with Swivel Spout **SWIFT**

SSP-1109 | Pillar Cock Single Lever Movement with Swivel Spout **SWIFT**

TALL BOY'S



SSP-2204 | Pillar Cock with 200mm Extended Body, Foam Flow



SSP-2203 | Pillar Cock with 300mm Extended Body, Foam Flow



MOUTH OPERATED TAPS



SSP-2201 | Pillar Cock Face Operation  
with 300mm Extended Spout, Foam Flow



SSP-2202  
Pillar Cock Face Operation  
with 200mm Extended Spout, Foam Flow

SURGICAL TAPS



SSP-2208 | Pillar Cock Elbow Action with Extended Lever, Foam Flow



SSP-2207 | Bib Cock Elbow Action with Extended Lever, Foam Flow

PRESSMATIC TAPS



SSP-2205  
Pillar Cock Self Closing  
Foam Flow



SSP-2206  
Urinal Flush Cock Self Closing

# NEW FLUSH COCKS & BIBCOCKS 2 IN 1



SPR-1128 | Bib Cock 2 in 1 Either Flow, Foam Flow



SPR-1118  
Flush Cock 1" Rising Rod Half Turn w/o Cap



SPR-1118A  
Flush Cock 1" Floweron Half Turn with Cap



VRN-1118  
Flush Cock 1" Quarter Turn **VERNA**



FL-1118  
Flush Cock 1" Quarter Turn **FLORENZ**

# BATH SPOUTS



BTS-2101  
Bath Tub Spout with Wall Flange



BTS-2102  
Bath Tub Spout with button attachment with Wall Flange



BTS-2103  
Bath Tub Spout Heavy with Wall Flange



BTS-2104  
Bath Tub Spout Heavy with button attachment with Wall Flange

# CONCEALED PART HIGH FLOW DIVERTORS 40MM & 46MM



**ALD-4002**  
40 mm High flow diverter body  
with 2 inlets & 2 outlets



**ALD-4004D**  
40 mm High flow diverter body  
with 2 inlets & 4 outlets Dial Type



**ALD-4004B**  
40 mm High flow diverter body  
with 2 inlets & 4 outlets Push Button Type



**ALD-4602**  
46 mm High flow diverter body  
with 2 inlets & 2 outlets



**ALD-4604D**  
46 mm High flow diverter body  
with 2 inlets & 4 outlets Dial Type



**ALD-4604B**  
46 mm High flow diverter body  
with 2 inlets & 4 outlets Push Button Type



**ALD-4603**  
46 mm High flow diverter body  
with 3 inlets & 2 outlets



**ALD-4603D**  
46 mm High flow diverter body  
with 3 inlets & 4 outlets Dial Type



**ALD-4603B**  
46 mm High flow diverter body  
with 3 inlets & 4 outlets Push Button Type



# CONCEALED PART HIGH FLOW DIVERTORS IN TECHNO BOX 40MM & 46MM



**ALD-4002T**  
40 mm High flow divertor body  
with 2 inlets & 2 outlets In Techno Box



**ALD-4004DT**  
40 mm High flow divertor body  
with 2 inlets & 4 outlets Dial Type  
In Techno Box



**ALD-4004BT**  
40 mm High flow divertor body  
with 2 inlets & 4 outlets Push Button Type  
In Techno Box



**ALD-4602T**  
46 mm High flow divertor body  
with 2 inlets & 2 outlets In Techno Box



**ALD-4604DT**  
46 mm High flow divertor body  
with 2 inlets & 4 outlets Dial Type  
In Techno Box



**ALD-4604BT**  
46 mm High flow divertor body  
with 2 inlets & 4 outlets Push Button Type  
In Techno Box

# BYELOOP SERIES COMPLIMENT SET

## CONCEALED PART HIGH FLOW DIVERTORS 40MM & 46MM



**BLP-4002**  
40 mm High flow diverter body  
with 2 inlets & 2 outlets Complete set Byeloop



**BLP-4004D**  
40 mm High flow diverter body  
with 2 inlets & 4 outlets Dial Type  
Complete set Byeloop



**BLP-4004B**  
40 mm High flow diverter body  
with 2 inlets & 4 outlets Push Button Type  
Complete set Byeloop



**BLP-4602**  
46 mm High flow diverter body  
with 2 inlets & 2 outlets Complete set Byeloop



**BLP-4604D**  
46 mm High flow diverter body  
with 2 inlets & 4 outlets Dial Type  
Complete set Byeloop



**BLP-4604B**  
46 mm High flow diverter body  
with 2 inlets & 4 outlets Push Button Type  
Complete set Byeloop



**BLP-4603**  
46 mm High flow diverter body  
with 3 inlets & 2 outlets Complete set Byeloop



**BLP-4603D**  
46 mm High flow diverter body  
with 3 inlets & 4 outlets Dial Type  
Complete set Byeloop



**BLP-4603B**  
46 mm High flow diverter body  
with 3 inlets & 4 outlets Push Button Type  
Complete set Byeloop

# BYELOOP SERIES COMPLIMENT SET

## HIGH FLOWDIVERTORS IN TECHNO BOX 40MM & 46MM



**BLP-4002T**  
40 mm High flow diverter body  
with 2 inlets & 2 outlets  
In Techno Box Complete set Byeloop



**BLP-4004DT**  
40 mm High flow diverter body  
with 2 inlets & 4 outlets Dial Type  
In Techno Box Complete set Byeloop



**BLP-4004BT**  
40 mm High flow diverter body  
with 2 inlets & 4 outlets Push Button Type  
In Techno Box Complete set Byeloop



**BLP-4602T**  
46 mm High flow diverter body  
with 2 inlets & 2 outlets  
In Techno Box Complete set Byeloop



**BLP-4604DT**  
46 mm High flow diverter body  
with 2 inlets & 4 outlets Dial Type  
In Techno Box Complete set Byeloop



**BLP-4604BT**  
46 mm High flow diverter body  
with 2 inlets & 4 outlets Push Button Type  
In Techno Box Complete set Byeloop









KUB-1730 | Soap Dish



KUB-1740  
Tumbler Holder



KUB-1775  
Toilet Paper Holder with Flap



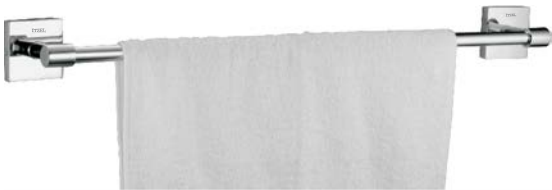
KUB-1736  
Soap Dish Cum Tumbler Holder



KUB-1760 | Towel Rack



KUB-1720 | Towel Ring



KUB-1711  
Towel Rod 600mm



KUB-1780  
Liquid Soap Dispenser



BOS-1740 | Tumbler Holder



BOS-1730  
Soap Dish



BOS-1775  
Toilet Paper Holder with Flap



BOS-1770  
Toilet Paper Holder



BOS-1780  
Liquid Soap Dispenser





BOS-1720 | Towel Ring



BOS-1750 | Robe Hook



BOS-1711 | Towel Rod 600mm



BOS-1760  
Towel Rack



BOS-1736  
Soap Dish Cum Tumbler Holder



BOS-1735  
Soap Dish 2 in 1



AVN-1730 | Soap Dish



AVN-1720 | Towel Ring



AVN-1760 | Towel Rack



AVN-1740 | Tumbler Holder



AVN-1770 | Toilet Paper Holder



AVN-1750 | Robe Hook



AVN-1711 | Towel Rod 600mm



AVN-1780  
Liquid Soap Dispenser





ALD-1730 | Soap Dish



ALD-1760  
Towel Rack with Hook



ALD-1720 | Towel Ring



ALD-1740 | Tumbler Holder



ALD-1711 | Towel Rod 600mm



ALD-1770  
Toilet Paper Holder



ALD-1750  
Robe Hook



ALD-1780  
Liquid Soap Dispenser

# GLASS SHELVES



GSH-1003 | Glass Shelf Straight



GSH-1002 | Corner Glass Shelf Double



GSH-1000 | Corner Glass Shelf



GSH-1001 | Corner Glass Shelf Big



GSH-1004 | Glass Shelf Double



GSH-1006  
Corner Glass Shelf Small Heavy Brass Qbix



GSH-1009  
Corner Glass Shelf Small Heavy Brass Milano



GSH-1007  
Corner Glass Shelf Big Heavy Brass Qbix



GSH-1010  
Corner Glass Shelf Big Heavy Brass Milano



GSH-1005  
Glass Shelf Straight Heavy Brass Qbix



GSH-1008  
Glass Shelf Straight Heavy Brass Milano

# SHOWER ARMS

## WALL MOUNTED SHOWER ARMS



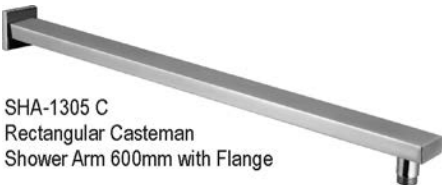
SHA-1305  
Rectangular Casteman  
Shower Arm 225mm with Flange



SHA-1305 A  
Rectangular Casteman  
Shower Arm 300mm with Flange



SHA-1305 B  
Rectangular Casteman  
Shower Arm 450mm with Flange



SHA-1305 C  
Rectangular Casteman  
Shower Arm 600mm with Flange



SHA-1303  
Round Divaz Shower Arm  
225mm with Flange



SHA-1303 A  
Round Divaz Shower Arm  
300mm with Flange



SHA-1303 B  
Round Divaz Shower Arm  
450mm with Flange



SHA-1304  
Round Verna Shower Arm  
225mm with Flange



SHA-1304 A  
Round Verna Shower Arm  
300mm with Flange



SHA-1304 B  
Round Verna Shower Arm  
450mm with Flange



SHA-1304 C  
Round Verna Shower Arm  
600mm with Flange

## CEILING MOUNTED SHOWER ARMS



SHA-1301B  
Round Ceiling  
Shower Arm  
450mm with Flange



SHA-1301A  
Round Ceiling  
Shower Arm  
300mm with Flange



SHA-1301  
Round Ceiling  
Shower Arm  
225mm with Flange



SHA-1302  
Square Ceiling  
Shower Arm  
225mm with Flange



SHA-1302A  
Square Ceiling  
Shower Arm  
300mm with Flange



SHA-1302B  
Square Ceiling  
Shower Arm  
450mm with Flange



# HEALTH FAUCETS

with 1 meter special flexible tube & hook



Made in Italy

BSP-2092  
Bidet Spray Italia Chrome Shut  
off CRUISE Chrome with CP  
Flexible hose



Made in Italy

BSP-2090  
Bidet Spray Italia White Shut  
off CRUISE White with CP  
Flexible hose

# HEALTH FAUCETS

with 1 meter special flexible tube & hook



BSP-2070 | REGULAR



BSP-2086 | SWIRL



BSP-2084 | MINNOVA



BSP-2076 | ASTRA



BSP-2072 | NUPRIN



BSP-2078 | ADIVA



BSP-2080 | PLATINUM



BSP-2074 | AQUILINE

WASTE COUPLING



WCP-6013  
Waste Coupling Half Thread Allegro



WCP-6015  
Waste Coupling Full Thread Allegro



WCP-6016  
Waste Coupling Half Thread Heavy CT



WCP-6017  
Waste Coupling Full Thread Heavy CT



WCP-6011 | Pop-up Waste Coupling 32mm F

BOTTLE TRAPS



ABT-2912  
Bottle Trap EUROPEAN



*Crafted for Obsession*

**E-mail** : [info@itzelbath.it](mailto:info@itzelbath.it) | [exports@itzelbath.it](mailto:exports@itzelbath.it)

**Browse** : [www.itzelbath.it](http://www.itzelbath.it)

**Global Hotline** : +39 05361945833 | **India Hotline** : +91 8882223344